

**Make sure to read this instruction sheet before use.
Additionally, store this sheet so that it can be referenced when needed.**

Before scratching and leaving eczema wounds on your décolletage that you don't want people to notice



CLINILABO

MEDIROID VS OINTMENT

Class 2 OTC drug

Brand name: CLINILABO MEDIROID VS OINTMENT

<Therapeutic agent for eczema and dermatitis>

- ◆ **CLINILABO MEDIROID VS OINTMENT** is a medicine containing a medium-grade steroid ingredient that is effective against ailments such as eczema of the hand that you don't want to people to notice.
- ◆ Switch OTC ingredient betamethasone valerate relieves painful eczema and dermatitis.
- ◆ A close-adhering balm that completely protects affected areas prone to chafing, such as the décolletage.



Precautions for Use



Things You Must Not Do

(Failure to follow these precautions may lead to your current symptoms worsening or a greater chance of side effects occurring)

1 The following individuals should not use this product:

Persons who have had allergic symptoms as a result of taking this product or any component of this product.

2 Do not use on the following areas:

- (1) Varicella (chicken pox), fungal infections such as athlete's foot or ringworm, or areas affected by suppuration.
- (2) Around the eyes, mucous membranes, etc.

3 Do not use extensively on the face

4 Do not use for long periods of time



Things To Consult On



1 The following individuals should consult with their doctor, pharmacist, or a registered seller before using this medicine

- (1) Persons receiving treatment from a doctor.
- (2) Persons who are pregnant or who think they may be pregnant.
- (3) Persons with a history of allergic reactions caused by medicines, etc.
- (4) Persons whose skin is extensively affected.
- (5) Persons with damp skin or severe sores.

2 If any of the following symptoms appear after you have used this medicine, you may be experiencing side effects. As such, please discontinue use immediately and consult with your doctor, pharmacist, or registered seller, bringing a copy of this instruction sheet with you

Relevant Area	Symptoms
Skin	Rash, redness, itching
Skin (affected area)	Types of tinea such as athlete's foot and ringworm, acne, suppuration symptoms, persistent irritation, and albescence

3 If symptoms do not improve after 5 to 6 days of using this medicine, discontinue use and consult with your doctor, pharmacist, or registered seller, bringing a copy of this instruction sheet with you

Efficacy

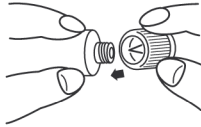
Eczema, dermatitis, heat rash, contact dermatitis,
itching, chilblains insect bites, hives

Usage and Dosage

Take an appropriate amount and apply it to the affected area
once or several times a day.

Note:

- (1) Strictly follow the prescribed usage and dosage.
- (2) If this medicine is being used by a child, ensure it is used under the guidance and supervision of a parent or guardian.
- (3) Avoid contact with eyes. In case of contact, rinse with cold or lukewarm water immediately. If you experience severe symptoms, see an eye specialist.
- (4) Use only for topical application.
- (5) Do not cover the area where this product is used with anything that has poor breathability, such as cling film. Also, when using the product on areas in contact with diapers, do not wear tight-fitting diapers or sealed underpants made of vinyl.
- (6) Do not use under makeup, after shaving, etc.



How to Open up a Hole in the Tube

Reverse the cap and press the protrusion firmly against the tip of the tube's raised neck.

Components

Per 1 g

Components	Amount	Action
Betamethasone valerate	1.2 mg	Relieves the source of inflammation and suppresses eczema, itching, and dermatitis.

Additives: Liquid paraffin, petroleum jelly

Precautions for Storage and Handling

- (1) Ensure the cap is tightened securely and store the medicine in a cool place that is out of direct sunlight.
- (2) Store this product out of reach of children.
- (3) Do not transfer to another container. (This may result in misuse or a change in quality)
- (4) Do not use this product beyond its expiration date. Use this medicine as soon as possible after opening, even if still within the expiration date. (In order to ensure quality.)



Disclaimer on Multilingual OTC Product Information

- This product is a pharmaceutical product approved under a Japanese law, the Law for Ensuring the Quality, Efficacy and Safety of Drugs and Medical Devices, with a view to its sale and use in Japan.
- Multilingual product information is a translation of the product labeling written in Japanese and provided for your information only. It does not warrant that its contents and the product itself conforms to laws and regulations in countries other than Japan.
- Multilingual product information is a tentative translation by the provider (or Our Company), and may be modified or altered without notice.
- The provider (or Our Company) assumes no responsibility for any occurred problem attributable to the contents of the multilingual product information.